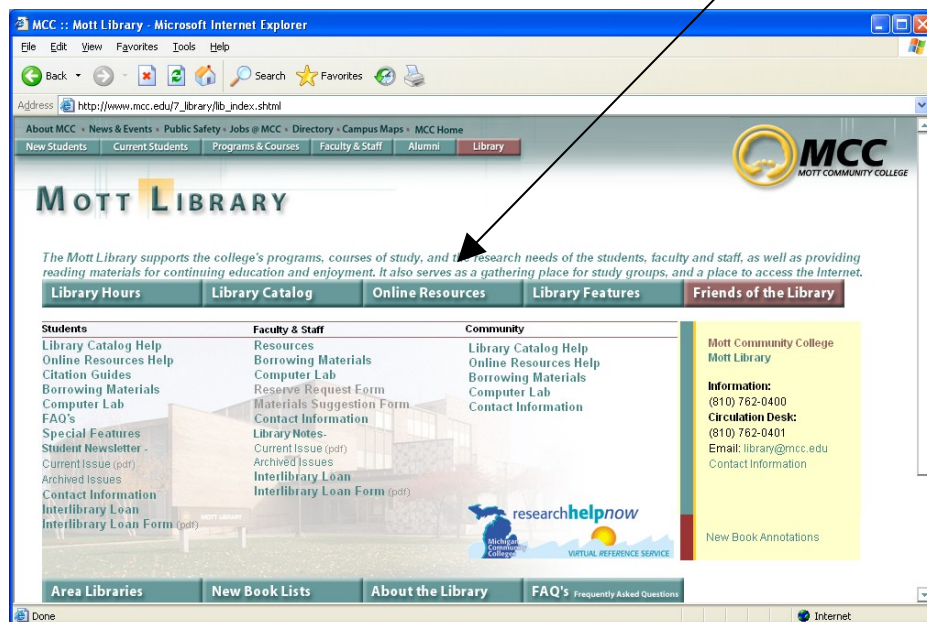
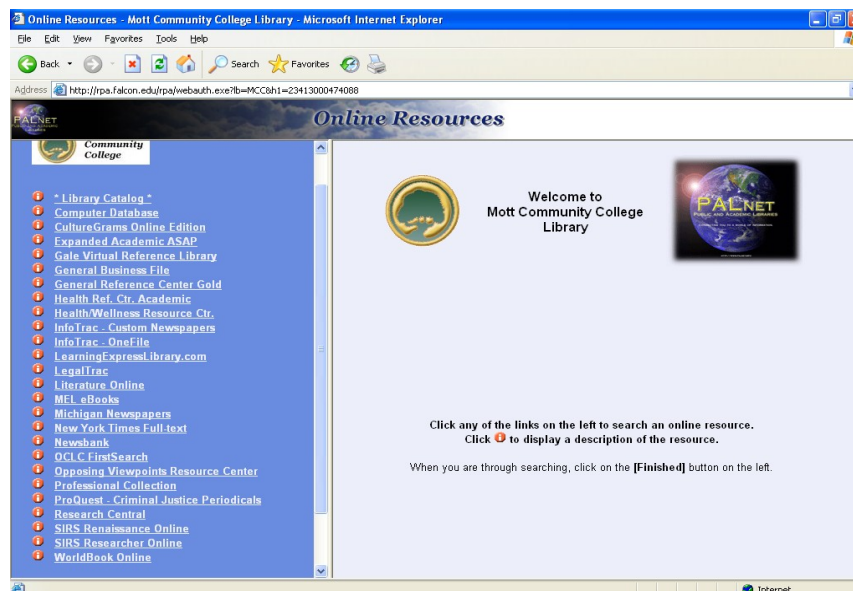


To use the **Culture Grams** database:

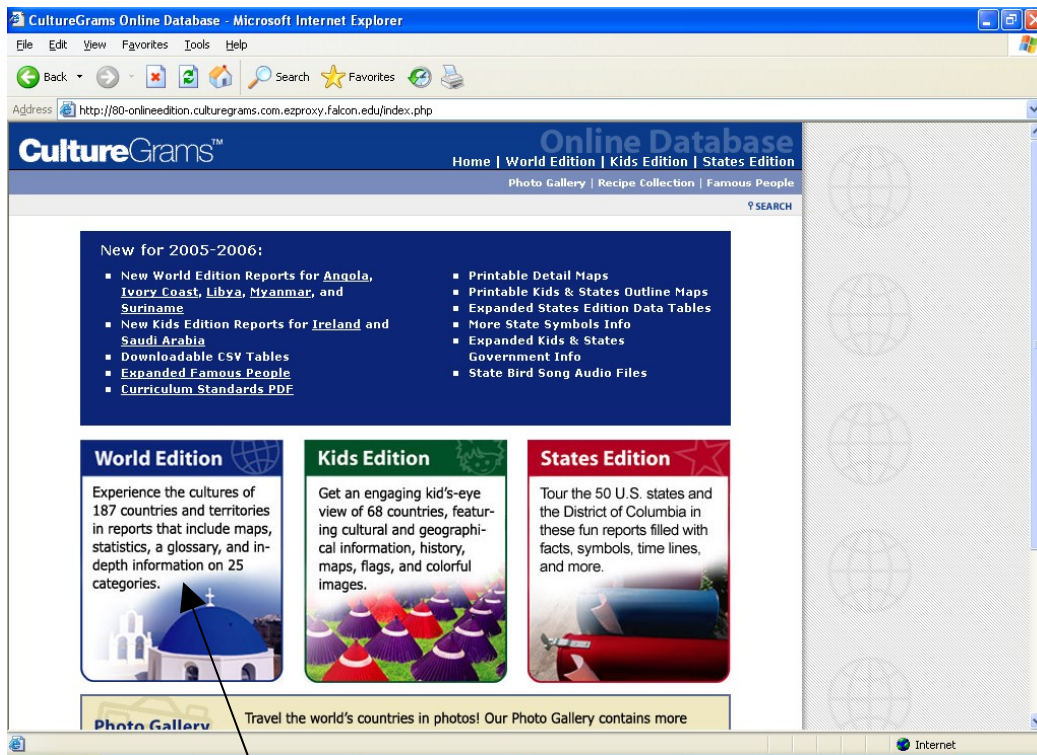
1. Open the Media Center homepage by clicking on *Internet Explorer*.
(**Note:** If it doesn't come up when you click on internet explorer, type in the following address <http://www.lindenschools.org/medialinks/bookmark.htm>)
2. Click on *Online Databases*.
3. Click on *Mott Community College Library Resources*.
4. When the Mott homepage comes up, click on *Online Resources*.
(**Note:** If the page requires a password, please ask Ms. Marton or Mrs. Coe for assistance.)



You should then see:

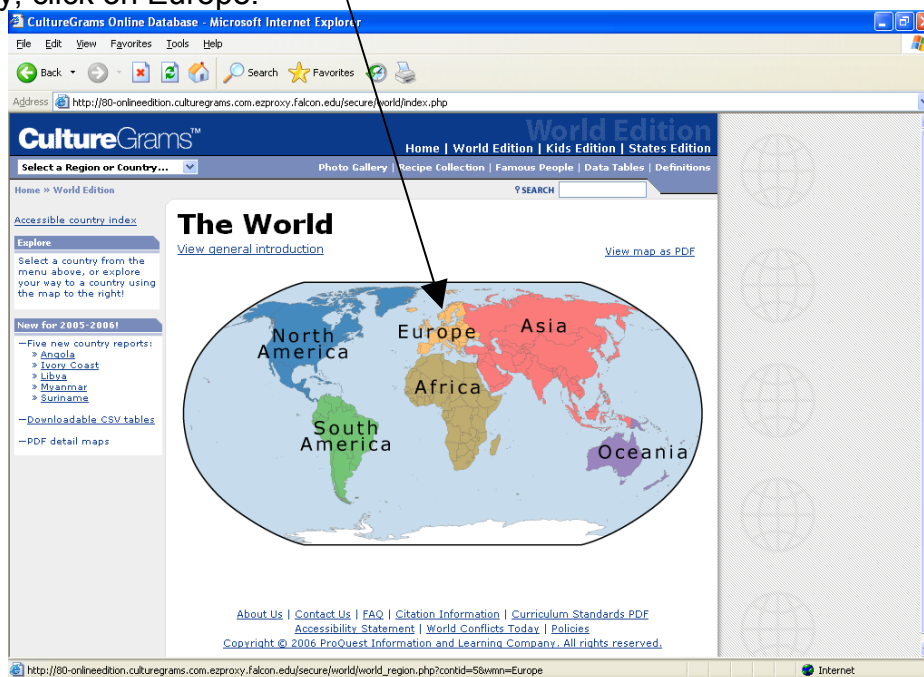


5. Click on *Culture Grams Online Edition*. The page will look like this:



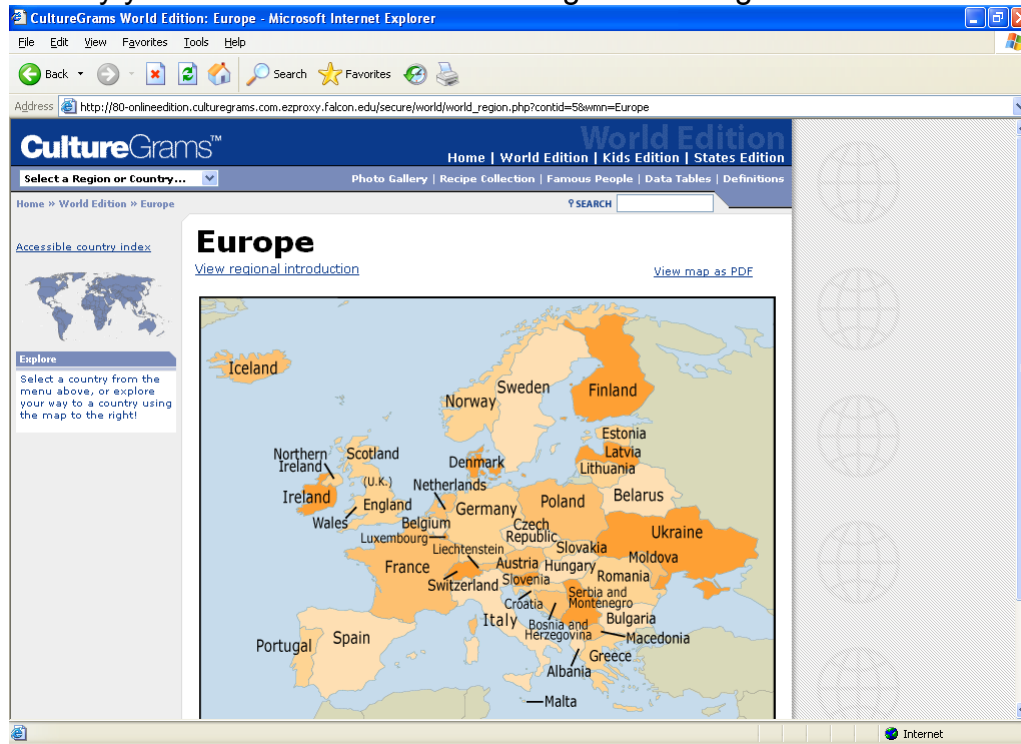
6. Click on *World Edition* to locate a wide variety of information on countries throughout the world.

7. Click on the continent to see a listing of its countries. For example, if you want to learn about Italy, click on Europe.



8. You will then see a map of Europe along with the names of all the countries. Click on the

country you want to learn about and begin searching!



NOTICE: there is a sidebar that lists information by category.

